

META-ANALYSIS OF THE RELATIONSHIPS BETWEEN THE ADEQUACY OF FAMILY RESOURCES AND PERSONAL, FAMILY AND CHILD WELL-BEING

Carl J. Dunst

Orelena Hawks Puckett Institute
United States of America
Email: cdunst@puckett.org

ABSTRACT

This meta-analysis includes evaluations of the relationships between the adequacy of family resources and seven dimensions of personal, family, and child well-being. Adequacy of family resources was expected to be related to enhanced positive well-being and attenuated negative well-being. Studies were eligible for inclusion if the *Family Resource Scale* was used to measure family resources, the total scale score was used to measure the adequacy of family resources, one or more personal, family, or child well-being measures was used to assess psychological functioning, and the correlations between the adequacy of family resources and well-being were reported. Forty-four research reports met the inclusion criteria and included 50 independent samples of study participants (N = 8,183). The studies were conducted in six different countries between 1986 and 2019. Results showed that adequacy of family resources was positively related to all seven personal, family, and child well-being measures. The findings provide support for the contention that the adequacy of family resources would be related to enhanced positive and attenuated negative well-being. The strength of the relationships between family resources and the different dimensions of well-being differed as a function of child risk condition but not the number of family resource scale items used to measure the adequacy of family resources. The results are consistent with the basic tenets of different family systems models. Both the strengths and limitations of the research synthesis are described.

Keywords: Family resources, personal well-being, family well-being, child well-being, meta-analysis

INTRODUCTION

Needs theories include a basic tenet that unmet needs motivate or engage people to pursue resources to achieve needs satisfaction or fulfillment (Alderfer, 1969; Deci & Ryan, 1985; Maslow, 1943; Max-Neef, 1987). A need is a judgment about something desired or lacking but wanted or required to achieve a goal or attain a particular end state or condition (Dunst et al., 1988b; Gasper, 2007). Resources include the physical, social, psychological, and financial supports that satisfy needs or are used to attain desired goals (Hesse-Biber & Williamson, 1984). According to Deci and Ryan (2000), the “satisfaction of needs...is associated with *psychological well-being*, whereas failure to satisfy needs is associated with deficits in well-being” (p. 233).

Well-being is an umbrella construct that includes multiple dimensions of psychological health and behavior (e.g., Disabato et al., 2016; Leon & Nunez, 2013). This includes both positive (e.g., life satisfaction, positive affect, happiness) and negative (e.g., depression, stress, anxiety, negative affect) dimensions of well-being. Needs theories include the hypothesis that needs satisfaction would be expected to be related to enhanced positive well-being and attenuated negative well-being. Findings from research syntheses of studies of the resource procurement--need satisfaction--enhanced well-being relationships provide support for these hypothesized relationships (e.g., Cerasoli et al., 2016; Ryan & Deci, 2001; Yu et al., 2018). Results from these syntheses show that

the pursuit of resources to attain goals or desired end states that resulted in successful goal attainment was associated with more positive and less negative well-being (e.g., Hobfoll, 2002; Klugg & Maier, 2015; Koestner et al., 2002).

Most needs theories emphasize the role an individual's psychological resources (hardiness, self-efficacy, optimism, positive thoughts, etc.) play in explaining variations in individual well-being and related psychological outcomes (e.g., Lightsey, 1996). Family systems theories and models, in contrast, focus on the role family resources, supports, and strengths play in affecting personal, family, and child well-being (Bronfenbrenner, 1979; B. E. Johnson & Ray, 2016; McCubbin & Patterson, 1983). The McCubbin and Patterson (1983) family systems model, for example, includes explicit attention to the role family resources play in buffering families from the adverse effects of stressful life events and in enhancing family and individual family member health and well-being (Lavee et al., 1985).

Family Resources and Well-Being

As noted by Walsh (1994), family system theory and research “seeks to identify the family strengths and resources that are critical for mastering life challenges and promoting the well-being and healthy development of individual family members...and well-functioning families” (p. 175). Family resources include “anything one individual family member can offer another [family member] to help that person *satisfy a need or attain goals*” (Hesse-Biber & Williamson, 1984, p. 262; italics added). Family resources are hypothesized to be one of a number of family systems factors that influence personal, family, and child well-being and psychological health (Brooks-Gunn, 1995; Walsh, 1994). These family-related factors include, but are not limited to, family relationships (Scabini, 2016), family strengths (DeFrain & Stinnett, 2002), family hardiness (Clark, 2002), family cohesion and adaptability (Lavee et al., 1985), and family support (Pierce et al., 2013).

Family resources can be categorized along a continuum from narrowly defined resources to broadly defined resources. Narrowly defined family resources are typically operationalized in terms of social status (e.g., income, education, occupational prestige; e.g., Citro & Michael, 1995; McLoyd, 1998). Broadly defined resources are operationalized in terms of the adequacy of basic (food, shelter, etc.), financial (money to pay bills, good job, etc.), healthcare (medical, dental, etc.), time availability (time for family and children, etc.), childcare (babysitting, preschool, etc.), social support (spouse or partner, friends, etc.), expendable income (entertainment, travel, etc.), and other kinds of family resources (e.g., Dunst & Leet, 1987; Rowland et al., 1985). Along the continuum between narrowly and broadly defined resources, family resources have been operationalized in terms of family and family member relationships, attributes, and characteristics (e.g., cohesion, adaptability, coping, communication, strengths; Lavee et al., 1985; Scabini, 2016).

Findings from studies of the relationships between family resources and different dimensions of personal, family, and child well-being indicate that regardless of how family resources are operationalized, resources are related to variations in family and family member well-being (see e.g., Brooks-Gunn, 1995; Fink, 1995; Scabini, 2016). Studies of the relationships between different predictor variables and well-being show that measures of broadly defined family resources account for larger amounts of variance in psychological functioning compared to other predictor variables (e.g., Eshbaugh et al., 2006; Gleeson et al., 2016; Koroloff et al., 2002; Paley et al., 2006). Results from several studies indicate that broadly defined measures of family resources account for significant amounts of variance in well-being beyond that associated with narrowly defined measures of family resources (e.g., Dunst & Leet, 1987; Smith et al., 2001). Findings from both of these studies indicated that broadly defined measures of family resources accounted for significant amounts of variance in personal and child well-being beyond that associated with family income, education, and socioeconomic measures of family resources.

Adequacy of Family Resources Measures

Two scales have been developed to assess the adequacy of family resources that include a broad range of resources (Dunst & Leet, 1985; Rowland et al., 1985). The *Perceived Adequacy of Resources Scale* (Rowland et al., 1985) assesses the adequacy of family resources that are hypothesized to be related to family quality of life but few studies have been conducted to evaluate these relationships. The *Family Resource Scale* (Dunst & Leet, 1985) assesses the relationship between the adequacy of family resources and different dimensions of well-being in households with young children or adolescents (Dunst & Leet, 1987; Dunst et al. 1986a, 1988a). The scale has been widely used to evaluate the covariation between family resources and different dimensions of well-being as described in this paper.

The *Family Resource Scale* (FRS) includes 30 items for assessing the adequacy of basic resources (food, shelter, etc.), financial resources (good paying job, money to pay monthly bills, etc.), healthcare (medical and dental care for family members), childcare (daycare, babysitting, etc.), time for family and friends, social support (kin, friends, etc.), and expendable income (money for entertainment, travel, etc.). A person completing the scale score each item on a 5-point Likert scale ranging from *not-at-all adequate* to *almost always adequate*. The sum of the scale item ratings is a global measure of the adequacy of family resources.

There are 10 versions of the FRS which differ in terms of the number of scale items and the number of subscales (Table 1). The number of scale items and subscales varies for conceptual, methodological, or procedural reasons (compare e.g., Dunst & Leet, 1987; Palermo et al., 2017; Van Horn et al., 2001). Psychometric analyses of the different versions of the scale show that the FRS is both a reliable and valid measure for assessing the adequacy of family resources. Table 1 shows the internal consistency estimates for the total FRS scores and the correlations between those scores and the personal well-being of the participants in the different FRS studies.

Table 1: Different Versions of the Family Resource Scale

Family Resource Scales		Number of Scale:		α	r_{WB}
		Items	Subscales		
Family Resource Scale	Dunst & Leet (1985)	30	6	.92	.57
Resource Scale for Teenage Mothers	Dunst et al. (1986b)	31	4	NR	.45
Family Resource Scale	Leet & Dunst (1988)	31	NR	.92	.57
Family Resource Scale	Taylor et al. (1993)	29	3	.93	.43
Modified Family Resource Scale	Crowley (1995)	30	6	.94	.41
Family Resource Scale-Modified	Taylor (1999)	28	3	.92	.43
Family Resource Scale-Revised	Van Horn et al. (2001)	20	4	.77	NR
Arabic Family Resource Scale	Almasri et al. (2014)	30	6	.86	NR
Family Resource Scale	Palermo et al. (2017)	17	3	.87	.19
Material Resources Scale	Ompad et al. (2018)	18	3	.91	.58
Family Resource Scale-Modified	Patwardhan et al. (2019)	29	4	.84	.24

NR = Not reported.

α = Coefficient alpha for the total scale scores.

r_{WB} = Correlation coefficient for the relationship between the total FRS scale scores and study respondent well-being.

The FRS was developed to measure the adequacy of resources in households with young children with identified disabilities, developmental delays, medical conditions, and those at-risk for poor developmental outcomes associated with different family-related conditions (e.g., impoverished households; abuse or neglect). The scale has also been used to assess family resources in households experiencing different child and family stressful life events and how family resources buffer families and family members from the negative effects of those life events and is a factor associated with enhanced family and family member well-being.

Purpose of the Study

The study described in this paper was a meta-analysis of the relationships between the adequacy of family resources and different dimensions of personal, family, and child well-being. Searches for research syntheses of FRS studies found no meta-analyses or systematic reviews of the relationships between broadly defined measures of family resources and different dimensions of well-being and psychological health and behavior.

The meta-analysis is part of a line of research by the author and his colleagues investigating how variations in different family systems model constructs are related to parent, family, and child functioning (Dunst, 2017). The model components include needs identification and fulfillment, resource and support mobilization, family strengths activation, and family-centered practices. The meta-analysis of family resources studies is part of this integrated line of research investigating how each of the model components is related to different dimensions of family and family member behavior and functioning.

Adequacy of family resources was operationalized in terms of the total scale scores on any of the FRS measures in Table 1. The main aim of the meta-analysis was to discern the nature of the relationships between family resources and different dimensions of psychological well-being in families of young children and adolescents. The adequacy of family resources was hypothesized to be related to enhanced positive well-being and attenuated negative well-being. The six main objectives of the study were:

Objective 1. Determine if the relationships between family resources and well-being are the same as those found in meta-analyses of studies of individual psychological resources.

Objective 2. Compare the strengths of the relationships between family resources and different dimensions of personal well-being.

Objective 3. Compare the strengths of the relationships between family resources and different dimensions of family well-being.

Objective 4. Compare the strengths of the relationships between family resources and personal, family, and child well-being.

Objective 5. Determine if the strength of the relationships between family resources and well-being differ as a function of child conditions or family-related life events or conditions.

Objective 6. Evaluate whether the number of family resource scale items moderate the relationship between adequacy of family resources and well-being.

METHODOLOGY

Approach

The guidelines and reporting standards described by Appelbaum et al. (2018) and Siddaway et al. (2019) were used to conduct the meta-analysis and report the results from the research synthesis. This included the methods to locate FRS studies, aggregate the results from the studies, conduct analyses related to each meta-analysis objective, and report the results for the different sets of analyses. The study protocol is included in the supplemental report for the meta-analysis (Dunst, 2021b).

Search Strategy

Natural language searches were used to locate FRS studies since *family resources* is not a controlled vocabulary term in any of the thesauri of the databases used as search sources. Both “family resource scale” and “family resources scale” were first used to locate studies depending on the search source. The terms “family resource” or “family resources” AND “scale OR instrument OR inventory OR questionnaire” were also used to locate relevant studies. Both sets of searches were followed by searches for “adequacy of family resources” and “adequacy of resources” AND (the surnames of the first authors of each of the scales in Table 1). Additional search terms were used as studies were located and related terms were used to describe the FRS or family resources were

identified. For example, some investigators who used one of the scales in Table 1 to measure family resources referred to family resources as family needs, family supports, or family strengths (e.g., Littlewood, 2008; Raikes & Thompson, 2005).

Search Sources

The primary search sources were PsycNET, ProQuest Central, ProQuest Theses and Dissertations, PubMed, ERIC (Educational Resource Information Center), and Google Scholar. The secondary search sources were ResearchGate, JSTOR, BASE, CORE, and DOAJ. Google was used to locate theses, dissertations, and other unpublished research reports not found in either the primary or secondary search sources.

Inclusion and Exclusion Criteria

Studies were included if (a) the total scale score of one of the versions of the FRS in Table 1 was used to measure the adequacy of family resources, (b) one or more well-being measures was used as a dependent variable, (c) the study participants were parents or other primary caregivers of children at-risk for poor outcomes due to child or family factors, (d) the parents or primary caregivers completed both the family resource scales and well-being scales, and (e) the correlations between family resources and well-being were used as the metric for assessing the relationship between study measures. Well-being was broadly defined as any dimension of psychological health, functioning, or behavior where the total scale score for the well-being measures was used as the study outcomes. No limitation was placed on the type of research report, where the study was conducted, or the year of publication.

Studies were excluded if (a) the correlations between family resources and well-being were not reported, (b) incomplete correlations between measures were reported, (c) correlations were reported as nonsignificant, or (c) the study participants were not primary caregivers in households with children at-risk for poor outcomes.

Data Preparation

The input for each family resource scale--well-being measure relationship was the correlation coefficient and sample size in each study. The Appendix includes the data that were the focus of analysis in the research synthesis.

The dependent measures were categorized as personal, family, or child well-being measures based on the attributional targets of the well-being scale items (Bugental et al., 1998). The personal well-being measures were further categorized as general psychological health, depression, psychological stress, life satisfaction, or parenting stress. The family well-being measures were categorized as family stress, family functioning, or family quality of life. The child well-being measures all measured child behavioral functioning.

The direction of the correlation coefficients for the relationships between family resources and well-being could be either positive or negative depending on the well-being measures. For example, family resources would be expected to be positively related to well-being measures where higher well-being scores indicate better functioning and negatively related to well-being measures where higher scores indicate poorer functioning. The signs of the latter were reversed so that the effect sizes (correlation coefficients) for the relationships between higher family resource scales indicated better well-being. All analyses were performed with Fisher r -to- z transformations which were transformed back to zero-order correlation coefficients for reporting purposes.

Methods of Analysis

Meta-Essentials was used to perform the meta-analysis (Suurmond et al., 2017; Van Rhee et al., 2015). This included publication bias analyses, effect size aggregation, between type of well-being

measure comparisons, and moderator analyses. Random effects models were used in all analyses because of the heterogeneity of the studies in terms of the study participants, child and family life events and conditions, and the differences in the scales used to measure well-being.

Publication Bias

The Egger regression test and Begg and Mazumber rank-order correlation test were used to assess the presence of publication bias. Separate analyses were done for each type of well-being measure. Non-significant test results indicate no publication bias (van Aert et al., 2019).

Effect Size Estimates

The average, weighted correlations between the total FRS scores and each of different the well-being measures were used to estimate the strength and the relationships between measures. Separate analyses were performed for each type of personal, family, and child well-being.

The output for each analysis included the number of study samples in an analysis (k), the total number of study participants (N), the average, weighted effect size (r) for the relationship between family resources and the different well-being measures, the 95% confidence interval (CI) for the average effect sizes, the Z -test for determining if the average effect size differs significantly from zero, and the p -value associated with the Z -test.

Between Type of Well-Being Comparisons

Q_{Between} (Q_B) was used to determine if the sizes of effects for the relationship between adequacy of family resources and different dimensions of well-being were the same or different. Q_B is analogous to a one-way between-group ANOVA for effect size data (Hedges, 1994). Between-group comparisons were done for the different personal well-being measures and the different family well-being measures. A between type of well-being comparison was also done for determining if sizes of effects for the relationships between family resources and personal, family, and child well-being measures were similar or different.

Moderator Analyses

Q_B was used to assess whether the strength of the relationship between family resources and well-being varied as a function of child and family life events or conditions. The risk conditions included children with identified disabilities or developmental delays (e.g., Autism; Speech and Language Delays), children with medical conditions (e.g., Neural Tube Defects; Myelomeningocele), children raised in low SES households (e.g., children in Early Head Start Programs), children at-risk for abuse or neglect (e.g., families in protective services programs), and children being raised by grandparents. Weighted linear regression analysis was used to determine if the number of FRS items used to compute a total scale score moderated the relationship between the adequacy of family resources and well-being.

SEARCH RESULTS

Study Selection

Figure 1 shows the flow chart for locating, screening, and identifying studies that met the inclusion criteria. All of the papers identified in the primary and secondary sources except Goggle Scholar were examined for relevance after duplicates were removed. The first 200 Google Scholar results were all screened; thereafter each page of results was screened until 10 pages in a row included no relevant papers.

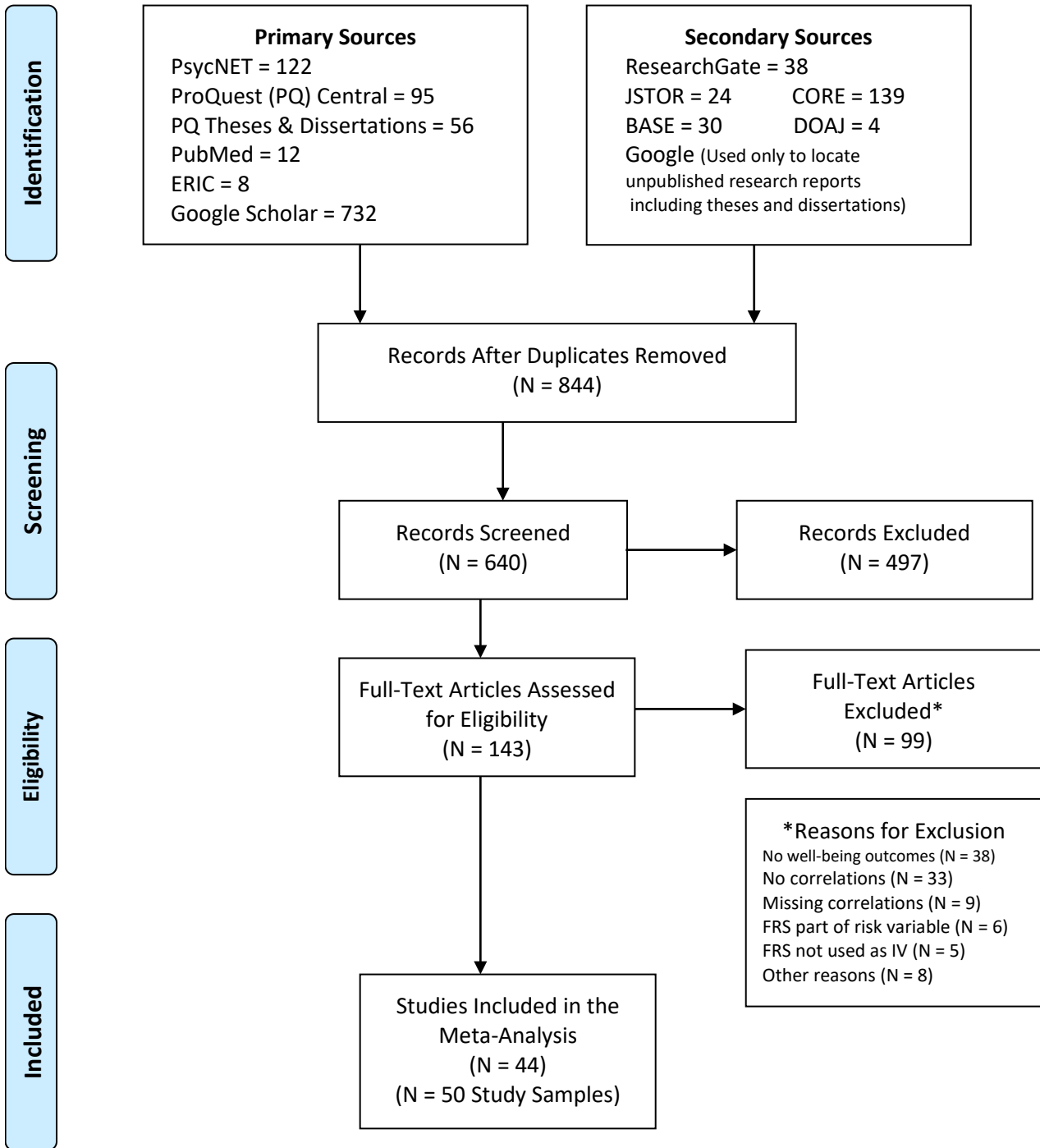


Figure 1. Flow chart for the identification of studies reporting the correlations between the adequacy of family resources and different dimensions of personal, family, and child well-being. (Adapted from Moher et al., 2009).

The large number of papers excluded during initial screening were either not research studies or were comparative research studies that did not include the correlations between family resources and well-being. The 99 full-text papers deemed non-eligibility were excluded for the reasons listed in Figure 1. Forty-four research reports met the inclusion criteria and included 50 independent samples of study participants. The 50 samples were considered the number of studies for purposes of conducting the meta-analysis.

Study and Participant Characteristics

Selected characteristics of the family resource studies, study participants, and the study participants' children are shown in Table 2. The individual study and study participant characteristics are included in the supplemental report for the meta-analysis (Dunst, 2021b).

Table 2: Selected Characteristics of the Family Resource Scale Studies, Study Participants, and the Participants' Children^a

Study Characteristics	Number of Studies	Percent of Studies
Year of Research Report		
1986-1999	7	14
2000-2009	24	48
2010-2019	18	36
Not Reported	1	2
Sample Size		
21-49	14	28
50-75	12	24
76-100	4	8
101-150	7	14
151-200	4	8
201-400	2	4
401-990	7	14
Location of Studies		
United States	43	86
India	2	4
Canada	2	4
South Africa	1	2
Brazil	1	2
Portugal	1	2
Type of Research Reports		
Peer Reviewed Journal Articles	26	52
Theses or Dissertations	18	36
Unpublished Research Reports	4	8
Conference Proceedings	2	4
Participant Characteristics		
Gender		
Primarily Mothers ^b	36	72
Grandmothers ^c	7	14
Fathers	4	8
Mixed Samples ^d	3	6
Percent Married		
<25	8	16
25-39	3	6
40-54	3	6
55-69	6	12
70-84	9	18
85-100	10	20
Not Reported	11	22
Mean Age (Years)		
17-19	3	6
20-29	8	16
30-39	18	36
40-49	7	14
50-62	7	14
Not Reported	7	14
Mean Years of School Completed		
9-10	8	16
11-12	12	24
13-14	13	26
15-17	7	14
Not Reported	10	20

Table 2, continued.

Child Characteristics	Number of Studies	Percent of Studies
Mean Age (Years)		
0-3	15	30
4-6	5	10
7-9	18	36
10-12	6	12
13-16	4	8
Not Reported	2	4
Child/Family Life Events or Conditions		
Children with Identified Disabilities	17	34
Children with Medical Conditions	13	26
Children in Low SES Households	9	18
Children Raised by Grandparents	6	12
Children At-Risk for Abuse or Neglect	5	10

^aSee Dunst (2021b) for the characteristics in each of the individual studies and samples.

^bSeventy-five percent or more of the participants were biological, adoptive, foster, or stepmothers of the children in the studies.

^cIncludes great grandmothers and step grandmothers.

^dIncludes both the children's mothers and other relatives or family members (e.g., fathers, grandparents).

Sixty percent of the studies included 100 or fewer study participants in contrast to 18% of the studies which included more than 200 study participants. Most studies were conducted in the United States. Seven studies were conducted in five other countries. Half of the studies were published in peer-reviewed journal articles and the other half were located in five different types of unpublished research reports.

Mothers of the children with identified or at-risk conditions were the study participants in the majority of the studies. The study samples were almost equally divided between those married or living with a partner and those in households without a partner. The participants were, on average, 30 to 39 years of age (Range = 17 to 62) and completed, on average, 12-13 years of formal schooling (Range = 9 to 17).

Most of the children were either preschoolers or early elementary school age. Sixty percent of the children had either identified disabilities or medical conditions associated with poor outcomes, whereas 40% of the children were at-risk for family-related factors (e.g., Low SES, child neglect).

Study Measures

Family Resources Measures

Four different versions of the FRS were used for assessing the adequacy of family resources (Dunst & Leet, 1985; Leet & Dunst, 1988; Taylor, 1999; Van Horn et al., 2001). The number of scale items used by primary study investigators ranged between 17 and 31 (See the Appendix).

Well-Being Measures

Table 3 shows the scales used to measure different dimensions of personal, family, and child well-being. The total well-being scale scores were the dependent measures in all but two primary studies. In two studies, the *Questionnaire on Resources and Stress-Short Form* (Friedrich et al., 1983) and the *General Health Survey-Short Form* (Ware et al., 1996) depression subscale scores were used to measure this well-being dimension.

The general health functioning measures each assessed different dimensions of well-being (depression, stress, anxiety, etc.). Each of the other personal well-being domain measures assessed

primarily one type of well-being where the preponderance of scale item targets of appraisal was used to categorize the measures.

The three types of family well-being measures differed in terms of the judgments participants were asked to make about their families. The family stress measures all included judgments of the number of family life events that were considered stressful or problematic. The family functioning well-being measures all included items measuring different types of family member interactions (e.g., communication, commitment, cohesion). The family quality of life well-being measures all assessed positive aspects of family functioning.

Table 3: Scales Used to Measure Personal, Family and Child Well-Being in the Family Resource Scale Studies

Well-Being Measures	Sources	# of Studies
Personal Well-Being Measures		
General Psychological Health		
Brief Symptom Inventory	Derogatis and Melisaratos (1983)	6
General Health Survey	Ware et al. (1993, 1996)	2
Health and Well-Being Index	Dunst (1986)	2
Depression Anxiety Stress Scale	Lovibond and Lovibond (1995)	1
Symptom Checklist	Derogatis (1992)	1
Questionnaire on Resources and Stress (QRS)	Holroyd (1974, 1987)	1
Depression		
Center for Epidemiological Studies-Depression Scale	Radloff (1977)	7
Beck Depression Inventory	Beck et al. (1961)	4
QRS-Short Form Depression Subscale	Friedrich et al. (1983)	1
General Health Survey Depression Subscale	Ware et al. (1996)	1
Psychological Stress		
Perceived Stress Scale	Cohen et al. (1983)	1
Perceived Stress Index	Johnson (2016)	1
Beck Anxiety Inventory	Beck et al. (1988)	1
Life Satisfaction		
Life Orientation Test	Scheier and Carver (1985)	1
World Health Organization Quality of Life Scale	World Health Organization (1996)	1
Satisfaction with Life Scale	Diener et al. (1985)	1
Psychological Well-Being Index	Bradburn and Caplovitz (1965)	1
Parenting Stress		
Parenting Stress Index	Abidin (1997)	19
Stress Index for Parents of Adolescents	Sheras et al. (1988)	1
Family Well-Being Measures		
Family Stress		
Life Events Inventory	Sarason et al. (1978)	2
Life Events Questionnaire	Persha and Rao (2002)	2
Family Inventory of Life Events and Changes	McCubbin and Patterson (1991)	2
Stressful Life Events Scale	Chang and Fine (2007)	1
Life Events Checklist	Kilmer et al. (1998)	1
Family Functioning		
Family Assessment Device	Miller et al. (1985)	2
Family Environment Scale	Moos and Moos (1994)	1
Conflict Tactics Scale	Straus et al. (1996)	1
Dyadic Adjustment Scale	Spanier (1976)	1
Family Quality of Life		
Family Functioning Style Scale	Deal et al. (2009)	4
Beach Center Quality of Life Scale	Hoffman et al. (2006)	1
Child Well-Being Measures		
Child Functioning		
Child Behavior Checklist	Achenbach (1999)	4
Behavior and Emotional Rating Scale	Epstein (2004)	2

Effect Size Data

The Appendix includes the data conducting the analyses of the relationships between the adequacy of family resources and the seven dimensions of well-being for each study including the independent and dependent measures. This includes the sample size in each study, the FRS used to measure the adequacy of family resources, the number of items used to compute a total FRS score, the scales used to measure well-being, the size of effect (correlation coefficient) between family resources and the well-being measures, and the 95% confidence interval for the size of effect.

SYNTHESIS RESULTS

Publication Bias

The results from the publication bias analyses for each of the nine dimensions of well-being are shown in Table 4. The observed and adjusted average sizes of effect and 95% confidence intervals for each well-being dimension are identical or nearly identical. Both the Egger regression and Begg-Mazumber rank-order test results indicated no publication bias.

Table 4: Results of the Publication Bias Analyses

Outcome Measures	Observed Average z		Adjusted Average z		Egger Regression Test		Begg Mazumber Rank-Order Test		
	z	95% CI	z	95% CI	t-test	p-value	Z-test	p-value	
Personal Well-Being									
General Health	.41	.36, .47	.41	.36, .47	0.77	.460	0.37	.714	
Depression	.35	.31, .39	.34	.30, .38	1.56	.150	1.75	.080	
Psychological Stress	.49	.18, .80	.49	.18, .80	1.52	.370	0.52	.602	
Life Satisfaction	.45	.25, .65	.41	.24, .58	1.92	.190	1.36	.174	
Parenting Stress	.43	.40, .46	.43	.40, .46	1.61	.130	1.22	.221	
Family Well-Being									
Family Stress	.35	.30, .39	.34	.30, .39	0.62	.550	0.89	.371	
Family Functioning	.36	.15, .57	.36	.15, .57	2.64	.080	1.22	.221	
Family QoL	.50	.34, .66	.50	.34, .66	1.28	.290	1.47	.142	
Child Well-Being									
Child Functioning	.35	.24, .46	.33	.23, .43	1.21	.290	0.75	.452	

NOTES: z = Fisher's transformation of the correlation coefficients. QoL = Quality of Life.

Relationships Between Family Resources and Well-Being

Table 5 shows the average weighted effect sizes for the relationships between the adequacy of family resources measures and personal, family, and child well-being. The sizes of effects for each of the nine well-being measures were all statistically significant as evidenced by the Z-test results. The effect sizes ranged between .35 (family stress and child functioning) and .47 (life satisfaction). These results indicate that all of the different dimensions of well-being covary with the adequacy of family resources where higher FRS scores are associated with better psychological functioning.

The between type of well-being measure (personal vs. family vs. child) comparison indicated that the relationships between the adequacy of family resources and well-being were much the same, $Q_B = 2.56$, $df = 2,77$, $p = .278$. This result indicates that family resources have similar influences on each of the three types of well-being.

The different sets of analyses of the relationships between the adequacy of family resources and the within and between types of well-being measures indicate that family resources are related to enhanced well-being. The sizes of effects for the five personal well-being measures were similar as evidenced by a nonsignificant between the type of personal well-being domain comparison, $Q_B = 2.65$, $df = 4,49$, $p = .618$. This result indicates that the adequacy of family resources has similar effects

Table 5: Average Weighted Effect Sizes for the Relationships Between Adequacy of Family Resources and Personal, Family and Child Well-Being

Well-Being Measures	k	N	r	95% CI	Z-Test	p-value
Personal Well-Being	54	8900	.41	.37, .44	21.81	.000
General Psychological Health	13	1429	.41	.33, .48	9.96	.000
Depression	14	2837	.37	.30, .44	10.00	.000
Psychological Stress	3	204	.45	.26, .61	9.39	.000
Life Satisfaction	4	260	.47	.15, .72	4.43	.000
Parenting Stress	20	4170	.42	.37, .47	15.66	.000
Family Well-Being	20	3000	.37	.31, .42	12.88	.000
Family Stress	10	2495	.35	.26, .43	8.43	.000
Family Functioning	5	190	.35	.19, .48	5.94	.000
Family Quality of Life	5	315	.46	.38, .53	14.97	.000
Child Well-Being	6	566	.35	.22, .46	6.89	.000
Child Behavior Functioning	6	566	.35	.22, .46	6.89	.000

NOTES. k = Number of studies, N = Number of study participants, r = Average, weighted effect size, and CI = Confidence interval.

regardless of the type of personal well-being. The sizes of effects for the three family well-being measures were also similar as determined by a nonsignificant between the type of family well-being comparison, $Q_B = 3.83$, $df = 2,17$, $p = .147$. This finding shows that the three types of family well-being covary with the adequacy of family resources in similar ways. psychological functioning (e.g., life satisfaction) and attenuated negative psychological functioning (e.g., personal stress, family stress). These findings illustrate the generalized importance of family resources as a family-related factor explaining variations in personal, family, and child well-being.

Moderator Analyses

The average weighted effect sizes for the relationships between adequacy of family resources and well-being for five different groups of children are shown in Table 6. The sizes of effect for each group of children differed significantly from zero as evidenced by the Z-test results. There was, however, a significant between-group difference in the sizes of effect, $Q_B = 15.51$, $df = 4,75$, $p = .004$. The size of effect for the children in low SES households is smaller than the sizes of effect for the other four groups of children. This was confirmed by a between-group comparison without the children in low SES households in the analysis where there was not a statistically significant difference between groups, $Q_B = 2.53$, $df = 3,57$, $p = .471$.

Table 6: Average Weighted Effect Sizes for the Relationships Between the Adequacy of Family Resources and Well-Being for Different Groups of Children

Child Conditions	k	N	r	95% CI	Z-Test	p-value
Children with Identified Disabilities or Delays	30	5502	.43	.39, .47	19.31	.000
Children At-Risk for Abuse or Neglect	5	1159	.42	.27, .55	7.26	.000
Children with Medical Conditions	18	1362	.41	.36, .45	17.31	.000
Children Raised by Grandparents	8	1305	.37	.27, .46	8.17	.000
Children in Low SES/Impoverished Homes	19	3138	.31	.25, .36	10.61	.000

The analysis regressing the effect sizes (correlation coefficients) between the adequacy of family resources and well-being on the number of family FRS items was not significant, $Q_B = 0.73$, $df = 1,78$, $p = .393$. This result indicates that the number of FRS items that were used to compute a total scale score did not influence the strength of the relationships between adequacy of family resources and well-being.

DISCUSSION

Main Findings

Results showed that the adequacy of family resources was related to each of the different dimensions of well-being that was the focus of investigation (Objective 1). The more adequate were family resources, the better was the study participants' personal well-being and their family and

children's well-being. The results are similar to those found in research syntheses of the relationships between individual psychological resources and personal well-being (Deci & Ryan, 2000; Hobfoll, 2002; Tay & Diener, 2011; Yu et al., 2018). Findings from the meta-analysis add to this knowledge base by showing how family resources are related to parent, family, and child well-being in addition to personal well-being.

The strength of the relationships between family resources and the five different dimensions of personal well-being was much the same as evidenced by a nonsignificant between type of well-being comparison (Objective 2). The same was the case for the relationships between family resources and the three different dimensions of family well-being. The between type of family well-being comparison was nonsignificant indicating that the strength of the relationships between family resources and family stress, family functioning, and family quality was much the same (Objective 3).

The between type of well-being comparison (personal vs. family vs. child) showed that the strength of the relationships between adequacy of family resources and the different types of well-being were much the same (Objective 4). This finding, together with the results for Objectives 1, 2, and 3, indicates that family resources have both enhanced positive and attenuated negative effects on different dimensions of personal, family, and child well-being. The findings are similar to those reported in research syntheses of the relationships between other family systems constructs (e.g., family strengths, family hardiness, family relationships, family cohesion) and personal, family, and child well-being (e.g., Klugg & Maier, 2015; Leeman et al., 2016; Olson et al., 1980, 2019; Scabini, 20016; Van Schoors et al., 2017).

The analyses of the relationships between the adequacy of family resources and well-being for different groups of children showed that regardless of child or family risk condition, resources were significantly related to well-being (Objective 5). The size of effect for the relationship between family resources and well-being, however, was smaller for children in low SES households compared to that for the other groups of children (Table 6). This is most likely the case because these families have fewer resources compared to middle- and upper-SES families (Brooks-Gunn, 1995). As noted by Shonkoff and Phillips (2000) "The psychological well-being of mothers...[is] likely to suffer in families with limited resources" (p. 268). The same is also true for family and child well-being as the results reported in this paper indicate.

Contrary to expectation, the number of FRS items used to compute a total scale score did not moderate the relationships between the adequacy of family resources and well-being (Objective 6). This most likely is the case since all four scales used to measure the adequacy of family resources included items tapping different types of resources rather than any one particular resource (e.g., only financial resources). Brannan et al. (2006) noted, for example, that eliminating redundant items for measuring the same type of family resource may not affect the predictive value of the adequacy of family resources measure. Results reported in this paper support this assertion.

Family Systems Theories and Family Resources

Family systems theories and models (e.g., Broderick, 1993; Johnson & Ray, 2016) include the proposition that family process variables account for variations in family and family member health, well-being, and functioning (see e.g., Walsh, 1994). Different theorists emphasize the importance of different process variables for explaining healthy family functioning.

The family systems model that framed the conduct of the meta-analysis includes four components: Needs identification and fulfillment, family resources and supports, family strengths and hardiness, and family-centered practices (Dunst, 2017). Research syntheses of family strengths and hardiness studies (Dunst, 2021a, 2021c; Dunst et al., 2021), social support studies (Dunst & Trivette 1990;

Dunst et al., 1997), and family-centered practices studies (Dunst et al., 2007, 2008) all yielded evidence showing that the different family systems model components or subcomponents are related to different dimensions of family and family member behavior and functioning, including well-being. Results from the meta-analysis in this paper add to this evidence by demonstrating how the adequacy of family resources is also related to personal, family, and child well-being. A companion meta-analysis includes results for the relationships between the adequacy of family resources and parenting beliefs and practices (Dunst, in press-b). The next step in this line of research is to investigate whether different types of family resources (e.g., basic resources, time availability, financial resources) are differentially related to family and family member behavior and functioning.

Strengths and Limitations

Several strengths of the meta-analysis include the large number of studies that met the inclusion criteria, the different types of research reports that were included in the research synthesis, the range of different dimensions of well-being that were the focus of investigation, and the generalizability of the results given the consistent pattern of results regardless of the number of FRS items and type of well-being measures. The latter is the case since the average effects size and confidence intervals for those effect sizes for all nine well-being measures indicated that the results would most likely be found in most families and households with children with different at-risk conditions.

Several limitations of the meta-analysis include the focus on only one measure of family resources and the use of correlation coefficients as the size of effects between family resources and well-being. The latter limits conclusions about the causal relationships between measures. Notwithstanding these limitations, the results are very similar to those found for the relationships between psychological resources and personal well-being.

REFERENCES

- Abidin, R. R. (1997). Parenting Stress Index: A measure of the parent-child system. In C. P. Zalaquett & J. Wood (Eds.), *Evaluating stress: A book of resources* (pp. 277-291). Scarecrow Education.
- Achenbach, T. M. (1999). The Child Behavior Checklist and related instruments. In M. E. Maruish (Ed.), *The use of psychological testing for treatment and planning and outcome assessment* (pp. 429-466). Lawrence Erlbaum.
- Alderfer, C. P. (1969). An empirical test of a new theory of human needs. *Organizational Behavior and Human Performance*, 4(2), 142-175. [https://doi.org/10.1016/0030-5073\(1069\)90004-X](https://doi.org/10.1016/0030-5073(1069)90004-X).
- Almasri, N., Saleh, M., & Dunst, C. J. (2014). Family resources for families of children with cerebral palsy in Jordan: Psychometric properties of the Arabic Family Resources Scale. *Child, Care, Health, and Development*, 40, 354-362. <https://doi.org/310.1111/cch.12087>.
- Appelbaum, M., Cooper, H., Kline, R. B., Mayo-Wilson, E., Nezu, A. M., & Rao, S. M. (2018). Journal article reporting standards for quantitative research in psychology: The APA publications and communications board task force report. *American Psychologist*, 73(1), 3-25. <https://doi.org/10.1037/amp0000191>.
- Armans, M. (2014). *Examining the effects of parenting support on discipline strategies and the mediating roles of parenting stress and parental efficacy in American Indian families*. [Master's thesis, Oklahoma State University]. <https://hdl.handle.net/11244/317756>.
- Bachanas, P. J., Kullgren, K. A., Schwartz, K. S., McDaniel, J. S., Smith, J., & Nesheim, S. (2001). Psychological adjustment in caregivers of school-age children infected with HIV: Stress, coping, and family factors. *Journal of Pediatric Psychology*, 26, 331-342. <https://doi.org/310.1093/jpepsy/1026.1096.1331>
- Beck, A. T., Epstein, N. B., Brown, G. K., & Steer, R. A. (1988). An inventory for measuring clinical anxiety: Psychometric properties. *Journal of Consulting and Clinical Psychology*, 56(6), 893-897. <https://doi.org/810.1037/0022-1006X.1056.1036.1893>.

- Beck, A. T., Ward, C. H., Mendelson, M., Mock, J., & Erbaugh, J. (1961). An inventory for measuring depression. *Archives of General Psychiatry*, 4, 561-571. <https://doi.org/510.1001/archpsyc.1961.01710120031004>.
- Bradburn, N. M., & Caplovitz, D. (1965). *Reports on happiness: A pilot study of behavior related to mental health*. Adline Publishing.
- Brannan, A. M., Manteuffel, B., Holden, E. W., & Heflinger, C. A. (2006). Use of the Family Resource Scale in children's mental health: Reliability and validity among economically diverse samples. *Administration and Policy in Mental Health and Mental Health Services Research*, 33(2), 182-197. <https://doi.org/110.1007/s10488-10006-10032-10488>.
- Broderick, C. B. (1993). *Understanding family process: Basics of family systems theory*. SAGE Publications.
- Bronfenbrenner, U. (1979). *The ecology of human development: Experiments by nature and design*. Harvard University Press.
- Brooks-Gunn, J. (1995). Children in families in communities: Risk and intervention in the Bronfenbrenner tradition. In P. Moen, G. H. Elder, Jr., & K. Luscher (Eds.), *Examining lives in context: Perspectives on the ecology of human development* (pp. 467-519). American Psychological Association. <https://doi.org/10.1037/10176-013>.
- Brown, R. T., Lambert, R., Devine, D., Baldwin, K., Casey, R., Doepke, K., . . . Eckman, J. (2000). Risk-resistance adaptation model for caregivers and their children with sickle cell syndromes. *Annals of Behavioral Medicine*, 22, 158-169. <https://doi.org/110.1007/BF02895780>.
- Budescu, M., Sisselman-Borgia, A., & Taylor, R. D. (2018). Perceptions of adequate personal time and wellbeing among African American families and adolescents. *Journal of Child and Family Studies*, 27, 1763-1773. <https://doi.org/1710.1007/s10826-10018-11014-10827>.
- Bugental, D. B., Johnston, C., New, M., & Silvester, J. (1998). Measuring parental attributions: Conceptual and methodological issues. *Journal of Family Psychology*, 12, 459-480. <https://doi.org/410.1037/0893-3200.1012.1034.1459>.
- Burrell, B., Thompson, B., & Sexton, D. (1994). Predicting child abuse potential across family types. *Child Abuse and Neglect*, 18, 1039-1049. [https://doi.org/1010.1016/0145-2134\(1094\)90130-90139](https://doi.org/1010.1016/0145-2134(1094)90130-90139).
- Candelaria, M. A., O'Connell, M. A., & Teti, D. M. (2006). Cumulative psychosocial and medical risk as predictors of early infant development and parenting stress in an African-American preterm sample. *Journal of Applied Developmental Psychology*, 27, 588-597. <https://doi.org/510.1016/j.appdev.2006.1008.1006>.
- Cerasoli, C. P., Nicklin, J. M., & Nassrelrgawi, A. S. (2016). Performance, incentives, and the needs for autonomy, competence, and relatedness: A meta-analysis. *Motivation and Emotions*, 40, 781-813. <https://doi.org/710.1007/s11031-11016-19578-11032>.
- Chang, Y., & Fine, M. A. (2007). Modeling parenting stress trajectories among low-income young mothers across the child's second and third years: Factors accounting for stability and change. *Journal of Family Psychology*, 21, 584-594. <https://doi.org/510.1037/0893-3200.1021.1034.1584>.
- Cheesman, J. (2009). *Raising an ADHD child: Relations between parental stress, child functional impairment, and subtype of the disorder*. [Honors Thesis, University of Cape Town]. https://open.uct.ac.za/bitstream/handle/11427/10245/thesis_hum_2011_cheesman_j.pdf?sequence=1&isAllowed=y.
- Citro, C. F., & Michael, R. T. (Eds.). (1995). *Measuring poverty: A new approach*. The National Academies Press.
- Clark, P. C. (2002). Effects of individual and family hardiness on caregiver depression and fatigue. *Research in Nursing and Health*, 25, 37-48. <https://doi.org/10.1002/nur.10014>.
- Cohen, S. H., Kamarck, T., & Mermelstein, R. (1983). A global measure of perceived stress. *Journal of Health and Social Behavior*, 24(4), 385-396. <https://doi.org/310.2307/2136404>.
- Coleman-Reed, F. V. (2016). *Grandparent caregivers: Factors contributing to their experience of life satisfaction*. [Doctoral Dissertation, University of Alabama]. https://ir.ua.edu/bitstream/handle/123456789/2801/file_1.pdf?sequence=1&isAllowed=y.
- Crowley, S. L. (1995). *Family functioning in families of children with disabilities: An intensive psychometric investigation of five family measures*. ERIC Reproduction Service No. ED381917. <https://eric.ed.gov/?q=%22family+functioning+in+families+of+children+with+disabilities%22&id=ED381917>.
- Deal, A. G., Trivette, C. M., & Dunst, C. J. (2009). *Family Functioning Style Scale: An instrument for measuring strengths and resources*. Winterberry Press.

- Deci, E. L., & Ryan, R. M. (1985). *Intrinsic motivation and self-determination in human behavior*. Plenum Press.
- Deci, E. L., & Ryan, R. M. (2000). The "what" and "why" of goal pursuits: Human needs and the self-determination of behavior. *Psychological Inquiry, 11*, 227-268. https://doi.org/210.1207/S15327965PLI15321104_15327901.
- DeFraim, J., & Stinnett, N. (2002). Family strengths. In J. J. Ponzetti (Ed.), *International encyclopedia of marriage and family* (Vol. 2nd, pp. 637-642). Macmillan Press.
- Derogatis, L. R. (1992). *SCL-90-R: Administration, scoring, and procedures manual-II for the Revised Rating Scale* (2nd ed.). Clinical Psychometric Research.
- Derogatis, L. R., & Melisaratos, N. (1983). The Brief Symptom Inventory: An introductory report. *Psychological Medicine, 13*(3), 595-605. <https://doi.org/510.1017/S0033291700048017>.
- Diener, E., Emmons, R. A., Larsen, R. J., & Griffin, S. (1985). The Satisfaction With Life Scale. *Journal of Personality Assessment, 49*, 71-75. https://doi.org/10.1207/s15327752jpa15324901_15327713.
- Disabato, D. J., Goodman, F. R., Kashdan, T. B., Short, J. L., & Jarden, A. (2016). Different types of well-being? A cross-cultural examination of hedonic and eudaimonic well-being. *Psychological Assessment, 28*(5), 471-482. <https://doi.org/410.1037/pas0000209>.
- Dunst, C. J. (1986). *Health and Well-Being Index: A short form for measuring parental health and well-being*. Winterberry Press.
- Dunst, C. J. (2017). Family systems early childhood intervention. In H. Sukkar, C. J. Dunst, & J. Kirkby (Eds.), *Early childhood intervention: Working with families of young children with special needs* (pp. 38-60). Routledge.
- Dunst, C. J. (2021a). Family strengths, the circumplex model of family systems, and personal and family functioning: A meta-analysis of the relationship among study measures. *Journal of Behavior, Health & Social Issues, 13*(2), 1-19. <http://dx.doi.org/10.22201/fesi.20070780e.20072021.20070713.20070782.20077837>.
- Dunst, C. J. (2021b). *Meta-analyses of the relationships between the adequacy of family resources and personal, parenting, family and child well-being and parenting beliefs and practices: Supplemental report*. <https://www.puckett.org/FRS/MetaAnalyses/SupplementalReport.pdf>.
- Dunst, C. J. (2021c). A meta-analytic investigation of the relationships between different dimensions of family strengths and personal and family well-being. *Journal of Family Research, 33*(1), 209-229. <https://doi.org/210.20377/jfr-20578>.
- Dunst, C. J. (in press-a). Meta-analysis of the relationships between the adequacy of family resources and parenting beliefs and practices. *Journal of Psychology and Behavioral Science*.
- Dunst, C. J. (in press-b). Meta-analysis of the relationships between the adequacy of family resources and personal, family, and child well-being. *European Journal of Psychological Research*.
- Dunst, C. J., & Leet, H. E. (1985). *Family Resource Scale: Reliability and validity*. Winterberry Press.
- Dunst, C. J., & Leet, H. E. (1987). Measuring the adequacy of resources in households with young children. *Child: Care, Health and Development, 13*, 111-125. <https://doi.org/110.1111/j.1365-2214.1987.tb00528.x>.
- Dunst, C. J., Leet, H. E., & Trivette, C. M. (1988a). Family resources, personal well-being, and early intervention. *Journal of Special Education, 22*, 108-116. <https://doi.org/110.1177/002246698802200112>.
- Dunst, C. J., Leet, H. E., Vance, S. D., & Cooper, C. S. (1986a). *Resource Scale for Teenage Mothers*. Winterberry Press.
- Dunst, C. J., Serrano, A. M., Mas, J. M., & Espe-Sherwindt, M. (2021). Meta-analysis of the relationships between family strengths and parent, family and child well-being. *European Journal of Applied Positive Psychology, 5*, Article 5. <https://www.nationalwellbeingsservice.org/volumes/volume-5-2021/volume-2025-article-2025/>.
- Dunst, C. J., & Trivette, C. M. (1990). Assessment of social support in early intervention programs. In S. Meisels & J. Shonkoff (Eds.), *Handbook of early intervention* (pp. 326-349). New York, NY: Cambridge University Press.
- Dunst, C. J., Trivette, C. M., & Deal, A. G. (1988b). *Enabling and empowering families: Principles and guidelines for practice*. Brookline Books.
- Dunst, C. J., Trivette, C. M., & Hamby, D. W. (2007). Meta-analysis of family-centered helping practices research. *Mental Retardation and Developmental Disabilities Research Reviews, 13*, 370-378. doi:10.1002/mrdd.20176

- Dunst, C. J., Trivette, C. M., & Hamby, D. W. (2008). *Research synthesis and meta-analysis of studies of family-centered practices*. Winterberry Press.
- Dunst, C. J., Trivette, C. M., & Jodry, W. (1997). Influences of social support on children with disabilities and their families. In M. Guralnick (Ed.), *The effectiveness of early intervention* (pp. 499-522). Baltimore, MD: Brookes.
- Dunst, C. J., Vance, S. D., & Cooper, C. S. (1986b). A social systems perspective of adolescent pregnancy: Determinants of parent and parent-child behavior. *Infant Mental Health Journal*, 7, 34-48. [https://doi.org/10.1002/1097-0355\(198621\)198627:198621<198634::AID-IMHJ2280070105>2280070103.2280070100.CO;2280070102-B](https://doi.org/10.1002/1097-0355(198621)198627:198621<198634::AID-IMHJ2280070105>2280070103.2280070100.CO;2280070102-B).
- Epstein, M. H. (2004). *BERS-2: Behavioral and Emotional Rating Scale: Examiner's manual* (2nd ed.). PRO-ED.
- Ericson, K. J. (1998). Predicting family strengths in families caring for children with disabilities [Doctoral Dissertation, University of Nebraska]. *All Graduate Theses and Dissertations*, 2576. <https://digitalcommons.usu.edu/etd/2576>
- Eshbaugh, E. M., Lempers, J., & Luze, G. J. (2006). Objective and self-perceived resources as predictors of depression among urban and non-urban adolescent mothers. *Journal of Youth and Adolescence*, 35, 839-847. <https://doi.org/810.1007/s10964-10006-19108-10968>.
- Espeleta, H. C., Beasley, L., Bohora, S., Ridings, L. E., & Silovsky, J. F. (2019). Depression in Latina mothers: Examining the roles of acculturation, enculturation, social support, and family resources. *Cultural Diversity and Ethnic Minority Psychology*, 25(2), 527-538. <https://doi.org/510.1037/cdp0000259>.
- Farber, M. L. Z., Timberlake, E. M., Wall, S. M., & Taylor, N. E. (2002). Early Head Start intervention with families and families' investment in children. In A. f. C. a. F. U.S. Department of Health and Human Services, Office of Planning Research and Evaluation (Ed.), *Making a difference in the lives of infants and toddlers and their families: The impacts of Early Head Start: Vol. 3. Local contributions to understanding the programs and their impacts* (pp. 35-54). Editor. https://www.google.com/books/edition/Early_Head_Start_Research_Making_a_Diffe/5SrIwQxuHwAC?hl=en&gbpv=1&dq=farber+%22early+head+start+intervention%22&pg=PA35&printsec=frontcover.
- Ferreira, D. S. A. (2014). *Qualidade de vida familiar e sua relacao com o suporte social: Percecoes dos cuidadores de crianas com incapacidade [Quality of family life and its relationship with social support: Perceptions of caregivers of children with disabilities]*. https://recipp.ipp.pt/bitstream/10400.22/6757/1/DM_DianaFerreira_2014.pdf.
- Fink, S. V. (1995). The influence of family resources and family demands on the strains and well-being of caregiving families. *Nursing Research*, 44(3), 139-146.
- Friedrich, W. N., Greenberg, M. T., & Crnic, K. (1983). A short form of the Questionnaire on Resources and Stress. *American Journal of Mental Deficiency*, 88, 41-48.
- Gasper, D. (2007). Conceptualizing human needs and wellbeing. In I. Gough & J. A. MacGregor (Eds.), *Wellbeing in developing countries: New approaches and research strategies* (pp. 47-70). Cambridge University Press.
- Gatling, T. N. (2005). *A study of the resiliency characteristics and proactive behaviors of mothers who have children with short stature*. [Doctoral Dissertation, University of Georgia]. https://getd.libs.uga.edu/pdfs/gatling_tiffany_n_200508_phd.pdf.
- Gleeson, J. P., Hsieh, C.-M., & Cryer-Coupet, Q. (2016). Social support, family competence, and informal kinship caregiver stress: The mediating and moderating effects of family resources. *Children and Youth Services Review*, 67, 32-42. <https://dx.doi.org/10.1016/j.childyouth.2016.1005.1012>.
- Grunberg, V. A. (2016). *Neonatal intensive care unit infants, parental stress, couple and family impact: How family resources may attenuate the stress*. [Master's Thesis, Drexel University]. <http://hdl.handle.net/1860/idea:6811>.
- Hedges, L. V. (1994). Fixed effects models. In H. Cooper & L. V. Hedges (Eds.), *The handbook of research synthesis* (pp. 285-299). Russell Sage Foundation.
- Herman, S. E., & Marcenko, M. O. (1997). Perceptions of services and resources as mediators of depression among parents of children with developmental disabilities. *Mental Retardation*, 35, 458-467. [https://doi.org/410.1352/0047-6765\(1997\)1035<0458:POSARA>1352.1350.CO;1352](https://doi.org/410.1352/0047-6765(1997)1035<0458:POSARA>1352.1350.CO;1352).
- Hesse-Biber, S., & Williamson, J. (1984). Resource theory and power in families: Life cycle considerations. *Family Process*, 23, 261-278. <https://doi.org/210.1111/j.1545-5300.1984.00261.x>.

- Hill, T. L. (2010). *Child kinship care: An exploratory mixed methods study of social support, resources, and health issues of Nebraska child kinship caregivers*. [Doctoral Dissertation, University of Nebraska]. <http://digitalcommons.unl.edu/dissertations/AAI3403096>.
- Hobfoll, S. E. (2002). Social and psychological resources and adaptation. *Review of General Psychology*, 6, 307-324. <https://doi.org/310.1037/1089-2680.1036.1034.1307>.
- Hoffman, L., Marquis, J., Poston, D., Summers, J. A., & Turnbull, A. (2006). Assessing family outcomes: Psychometric evaluation of the Beach Center Family Quality of Life Scale. *Journal of Marriage and Family*, 68, 1069-1083. <https://doi.org/10.1111/j.1741-3737.2006.00314.x>.
- Holroyd, J. (1974). The Questionnaire on Resources and Stress: An instrument to measure family response to a handicapped family member. *Journal of Community Psychology*, 2, 92-94. [https://doi.org/10.1002/1520-6629\(197401\)197402:197401<197492::AID-JCOP2290020133>2290020133.2290020130.CO;2290020132-A](https://doi.org/10.1002/1520-6629(197401)197402:197401<197492::AID-JCOP2290020133>2290020133.2290020130.CO;2290020132-A).
- Holroyd, J. (1987). *Questionnaire on Resources and Stress: For families with chronically ill or handicapped members*. Clinical Psychology Publishing Co.
- Johnson, B. E., & Ray, W. (2016). Family systems theory. In S. Smith (Ed.), *The Wiley Blackwell encyclopedia of family studies* (pp. 782-787). Wiley-Blackwell Publishing.
- Johnson, V. A. (2016). *Improving outcomes for families involved in child protective services through an enhanced understanding of residential mobility's impact on caregiver-child relationships*. (Publication No. 10111902) [Doctoral Dissertation, University of North Carolina at Charlotte]. ProQuest Theses and Dissertations Global
- Kelley, S. J., Whitley, D., & Campos, B. C. (2011). Behavior problems in children raised by grandmothers: The role of caregiver distress, family resources, and the home environment. *Children and Youth Services Review*, 33, 2138-2145. <https://doi.org/2110.1016/j.childyouth.2011.2106.2021>.
- Kelley, S. J., Whitley, D., Sipe, T. A., & Yorker, B. C. (2000). Psychological distress in grandmother kinship care providers: The role of resources, social support, and physical health. *Child Abuse and Neglect*, 24, 311-321. [https://doi.org/310.1016/S0145-2134\(1099\)00146-00145](https://doi.org/310.1016/S0145-2134(1099)00146-00145).
- Kelley, S. J., Whitley, D. M., & Campos, P. E. (2013). Psychological distress in African American grandmothers raising grandchildren: The contribution of child behavior problems, physical health, and family resources. *Research in Nursing & Health*, 36, 373-385. <https://doi.org/310.1002/nur.21542>.
- Kilmer, R. P., Cook, J. R., Munsell, E. P., & Salvador, S. K. (2010). Factors associated with positive adjustment in siblings of children with severe emotional disturbance: The role of family resources and community life. *American Journal of Orthopsychiatry*, 80, 473-481. <https://doi.org/410.1111/j.1939-0025.2010.01050.x>.
- Kilmer, R. P., Cowen, E. L., Wyman, P. A., Work, W. C., & Magnus, K. M. (1998). Differences in stressors experienced by urban African American, White, and Hispanic children. *Journal of Community Psychology*, 26, 415-428. [https://doi.org/410.1002/\(SICI\)1520-6629\(199809\)199826:199805<199415::AID-JCOP199802>199803.199800.CO;199802-Q](https://doi.org/410.1002/(SICI)1520-6629(199809)199826:199805<199415::AID-JCOP199802>199803.199800.CO;199802-Q).
- Klugg, H. J. P., & Maier, G. W. (2015). Linking goal progress and subjective well-being: A meta-analysis. *Journal of Happiness Studies*(16), 37-65. <https://doi.org/10.1007/s10902-10013-19493-10900>.
- Koestner, R., Lekes, N., Powers, T. A., & Chicoine, E. (2002). Attaining personal goals: Self-concordance plus implementation intentions equals success. *Journal of Personality and Social Psychology*, 83(1), 231-244. <https://doi.org/210.1037/0022-3514.1083.1031.1231>.
- Koroloff, N., Pullmann, M., Savage, P., Guthrie, L., Rhodes, R., & Sessions, L. (2002). Caregiver resources and strain in a system of care. In J. M. G. King, J. Cook, M. D. Pullmann, & J. Simpson (Eds.), *Building on family strengths: Research and services in support of children and their families* (pp. 83-86). Portland State University, Research and Training Center on Family Support and Children's Mental Health. https://www.researchgate.net/publication/242160734_Caregiver_Resources_and_Strain_in_a_System_of_Care.
- Lavee, Y., McCubbin, H. I., & Patterson, J. M. (1985). The Double ABCX Model of family stress and adaptation: An empirical test by analysis of structural equations with latent variables. *Journal of Marriage and the Family*, 47(4), 811-825. <https://doi.org/810.2307/352326>.
- Leeman, J., Crandell, J., Lee, A., Bai, J., Sandelowski, M., & Knafl, K. (2016). Family functioning and the well-being of children with chronic conditions: A meta-analysis. *Research in Nursing & Health*, 39(4), 229-243. <https://doi.org/210.1002/nur.217525>.

- Leet, H. E., & Dunst, C. J. (1988). Family Resource Scale. In C. J. Dunst, C. M. Trivette, & A. G. Deal (Eds.), *Enabling and empowering families: Principles and guidelines for practice* (pp. 141). Brookline Books.
- Leon, J., & Nunez, J. L. (2013). Causal ordering of basic psychological needs and well-being. *Social Indicators Research*, 114, 243-253. <https://doi.org/210.1007/s11205-11012-10143-11204>.
- Levine, G. A. (2010). *The relation between family resources, child severity and parenting stress in parents of young children with autism*. [Honors Thesis, Vanderbilt University]. <http://discoverarchive.vanderbilt.edu/bitstream/handle/1803/4026/finalgabriellelevinethesis.pdf?sequence=1>.
- Lightsey, O. R. (1996). What leads to wellness? The role of psychological resources in well-being. *Counseling Psychology*, 24(4), 589-735. <https://doi.org/510.1177/0011000096244002>.
- Lindsey, R. A., & Barry, T. D. (2018). Protective factors against distress for caregivers of a child with autism spectrum disorder. *Journal of Autism and Developmental Disabilities*, 48, 1092-1107. <https://doi.org/1010.1007/s10803-10017-13372-10801>.
- Littlewood, K. A. (2008). Examining the kinship care experience: The impact of social support and family resources on caregiver health, family involvement with the child welfare system, and permanence for children. *Dissertation Abstracts International: Section A: Humanities and Social Sciences*, 69(4), 1543. <https://doi.org/1510.17615/17615rrb-17611v17603>.
- Loutzenhiser, L. (2001). *Risk, family functioning, and child competence in Head Start families*. [Doctoral Dissertation, University of Saskatchewan]. <https://www.collectionscanada.gc.ca/obj/s4/f2/dsk3/ftp05/NQ63895.pdf>.
- Lovibond, S. H., & Lovibond, P. F. (1995). *Manual for the Depression Anxiety Stress Scales*. Australia Psychology Foundation.
- Macias, M. M., Saylor, C. F., Haire, K. B., & Bell, N. L. (2007). Predictors of paternal versus maternal stress in families of children with neural tube defects. *Children's Healthcare*, 36, 99-115. <https://doi.org/110.1080/02739610701334558>.
- Maslow, A. H. (1943). A theory of human motivation. *Psychological Review*, 50, 370-396. <https://doi.org/310.1037/h0054346>.
- Max-Neef, M. (1987). Human needs and aspirations. In P. Ekins & M. Max-Neef (Eds.), *Real-life economics* (pp. 197-214). Routledge.
- McCubbin, H. I., & Patterson, J. M. (1983). The family stress process: The Double ABCX Model of adjustment and adaptation. *Marriage & Family Review*, 6(1-2), 7-37. https://doi.org/10.1300/J1002v1306n1301_1302.
- McCubbin, H. I., & Patterson, J. M. (1991). Family Inventory of Life Events and Changes. In H. I. McCubbin & J. M. Patterson (Eds.), *Family assessment inventories for research and practice* (2nd ed., pp. 179-199). University of Wisconsin, Madison, WI.
- McLoyd, V. C. (1998). Socioeconomic disadvantage and child development. *American Psychologist*, 53(2), 185-204. <https://doi.org/110.1037/0003-1066X.1053.1032.1185>.
- Miller, I. W., Epstein, N. B., Bishop, D. S., & Keitner, G. I. (1985). The McMaster Family Assessment Device: Reliability and validity. *Journal of Marital and Family Therapy*, 11(4), 345-356. <https://doi.org/310.1111/j.1752-0606.1985.tb00028.x>.
- Moher, D., Liberati, A., Tetzlaff, J., Altman, D. G., & Group, T. P. (2009). Preferred reporting items for systematic reviews and meta-analyses: The PRISMA Statement. *PLoS Medicine*, 6(6), e1000097. <https://doi.org/1000010.1001371/journal.pmed.1000097>.
- Moss, R. H., & Moos, B. S. (1994). *Family Environment Scale Manual* (3rd ed.). Consulting Psychology Press.
- Olson, D. H., Russell, C. S., & Sprenkle, D. H. (1980). Marital and family therapy: A decade review. *Journal of Marriage and the Family*, 42(4), 973-993. <https://doi.org/910.2307/351836>.
- Olson, D. H., Waldvogel, L., & Schlieff, M. (2019). Circumplex model of marital and family systems: An update. *Journal of Family Theory & Review*, 11(2), 199-211. <https://doi.org/110.1111/jftr.12331>.
- Ompad, D. C., Palamar, J. J., Krause, K. D., Kapadia, F., & Halkitis, P. N. (2018). Reliability and validity of a material resource scale and its association with depression among young men who have sex with men: The P18 cohort study. *American Journal of Men's Health*, 12(5), 1384-1397. <https://doi.org/1310.1177/1557988316651206>.
- Palermo, F., Ispa, J. M., Carlo, G., & Streit, C. (2017). Economic hardship during infancy and U.S. Latino preschoolers' sociobehavioral health and academic readiness. *Developmental Psychology*, 54(5), 890-902. <https://doi.org/810.1037/dev0000476>.

- Paley, B., O'Connor, M. J., Frankel, F., & Marquardt, R. (2006). Predictors of stress in parents of children with fetal alcohol spectrum disorders. *Developmental and Behavioral Pediatrics, 27*(5), 396-404. <https://doi.org/310.1097/00004703-200610000-200600005>.
- Patwardhan, I., Hurley, K. D., Lambert, M., & Ringle, J. L. (2019). An examination of the psychometric properties and validation of the Family Resource Scale for families seeking assistance with their child's behavioral difficulties. *Journal of Psychoeducational Assessment, 37*(3), 372-381. <https://doi.org/310.1177/0734282918769486>.
- Persha, A. J., & Rao, V. R. (2002). *Early intervention to children at risk for developmental delays*. India National Institute for the Mentally Handicapped. <http://www.niepid.nic.in/Early%20Intervention.pdf>.
- Pierce, G. R., Sarason, B. R., & Sarason, I. G. (Eds.). (2013). *Handbook of social support and the family*. Plenum Press.
- Pratt, S. J. (1992). *The influence of social support on the stress level of parents with disabled children*. [Doctoral Dissertation, Utah State University]. *All Graduate Theses and Dissertations, 6036*. <https://digitalcommons.usu.edu/etd/6036>.
- Radloff, L. S. (1977). The CES-D scale: A self-report depression scale for research in the general population. *Applied Psychological Measurement, 1*, 385-401. <https://doi.org/310.1177/014662167700100306>.
- Raikes, H. A., & Thompson, R. A. (2005). Efficacy and social support as predictors of parenting stress among families in poverty. *Infant Mental Health Journal, 26*(3), 177-190. <https://doi.org/110.1002/imhj.20044>.
- Ramos, C. A. (2019). *The role of the autonomic nervous system in early life stress and internalizing symptoms*. [Honor Thesis, University of Houston]. <https://hdl.handle.net/10657/4285>.
- Ridings, L. E., Beasley, L. O., Bohora, S. B., Daer, J. L., Owora, A., & Silovsky, J. F. (2018). Longitudinal investigation of depression, intimate partner violence, and supports among vulnerable families. *Journal of Interpersonal Violence, 33*(24), 3749-3771. <https://doi.org/3710.1177/0886260516639262>.
- Rowland, V. T., Dodder, R. A., & Nickols, S. Y. (1985). Perceived adequacy of resources: Development of a scale. *Home Economics Research Journal, 14*(2), 218-225. <https://doi.org/210.1177/1077727X8501400205>.
- Ryan, R. M., & Deci, E. L. (2001). On happiness and human potentials: A review of research on hedonic and eudaimonic well-being. *Annual Review of Psychology, 52*, 141-166. <https://doi.org/110.1146/annurev.psych.1152.1141.1141>.
- Salzer, J. S. (2005). *Grandparents raising grandchildren: A program evaluation of family well-being*. (Publication No. 3205409) [Doctoral Dissertation, Virginia Commonwealth University]. ProQuest Theses and Dissertations Global.
- Sarason, I. G., Johnson, J. H., & Siegel, J. M. (1978). Assessing the impact of life changes: Development of the Life Experiences Survey. *Journal of Consulting and Clinical Psychology, 46*, 932-946. <https://doi.org/910.1037/0022-1006X.1046.1035.1932>.
- Scabini, E. (2016). Family relationships: A long-lasting source of well-being. *Community Psychology in Global Perspective, 2*(1), 36-51. <https://doi.org/10.1285/i24212113v24212112i24212111p24212136>.
- Scheier, M. F., & Carver, C. S. (1985). Optimism, coping, and health: Assessment and implications of generalized outcome expectancies. *Health Psychology, 4*(3), 219-247. <https://doi.org/210.1037/0278-6133.1034.1033.1219>.
- Sheras, P. L., Abidin, R. R., & Konold, T. R. (1998). *Stress Index for Parents of Adolescents: Professional manual*. Psychological Assessment Resources.
- Shonkoff, J. P., & Phillips, D. A. (Eds.). (2000). *From neurons to neighborhoods: The science of early childhood development*. National Academy Press. <https://doi.org/10.17226/9824>.
- Siddaway, A. P., Wood, A. M., & Hedges, L. V. (2019). How to do a systematic review: A best practices guide for conducting and reporting narrative reviews, meta-analyses, and meta-syntheses. *Annual Review of Psychology, 70*, 747-770. <https://doi.org/710.1146/annurev-psych-010418-102803>.
- Smith, T. B., Oliver, M. N., & Innocenti, M. S. (2001). Parenting stress in families of children with disabilities. *American Journal of Orthopsychiatry, 71*(2), 257-261. <https://doi.org/210.1037/0002-9432.1071.1032.1257>.
- Spanier, G. B. (1976). Measuring dyadic adjustment: New scales for assessing the quality of marriage and similar dyads. *Journal of Marriage and Family, 38*, 15-28. <https://doi.org/10.2307/350547>.

- Spratt, E. G., Saylor, C. F., & Macias, M. M. (2007). Assessing parenting stress in multiple samples of children with special needs (CSN). *Families, Systems and Health, 25*, 435-449. <https://doi.org/410.1037/1091-7527.1025.1034.1435>.
- Straus, M. A., Hamby, S. L., Boney-McCoy, S., & Sugarman, D. B. (1996). The Revised Conflict Tactics Scale (CTS2). *Journal of Family Issues, 17*(3), 283-316. <https://doi.org/210.1177/019251396017003001>.
- Suurmond, R., van Rhee, H., & Hak, T. (2017). Introduction, comparison, and validation of *Meta-Essentials*: A free and simple tool for meta-analysis. *Research Synthesis Methods, 8*, 537-553. <https://doi.org/510.1002/jrsm.1260>.
- Tay, L., & Diener, E. (2011). Needs and subjective well-being around the world. *Journal of Personality and Social Psychology, 101*(2), 354-365. <https://doi.org/310.1037/a0023779>.
- Taylor, M. J. (1999). *Family support and resources in families having children with disabilities*. ERIC Document Reproduction Service No. ED434430. <https://eric.ed.gov/?q=%22family+support+and+resources+in+families%22&id=ED434430>.
- Taylor, M. J., Crowley, S. L., & White, K. R. (1993). *Measuring family support and resources: Psychometric investigation of the FSS and FRS*. ERIC Document Reproduction Service No.ED359249. <https://files.eric.ed.gov/fulltext/ED359249.pdf>.
- van Aert, R. C. M., Wicherts, J. M., & van Assen, M. A. L. (2019). Publication bias examined in meta-analyses from psychology and medicine: A meta-meta-analysis. *PLoS ONE, 14*(4), e0215052. <https://doi.org/0215010.0211371/journal.pone.0215052>.
- Van Horn, M. L., Bellis, J. M., & Snyder, S. W. (2001). Family Resource Scale revised: Psychometrics and validation of a measure of family resources in a sample of low-income families. *Journal of Psychoeducational Assessment, 19*, 54-68. <https://doi.org/10.1177/073428290101900104>.
- Van Rhee, H. J., Suurmond, R., & Hak, T. (2015). *User manual for Meta-Essentials: Workbooks for meta-analysis (Version 1.4)*. Erasmus Research Institute of Management, The Netherlands. www.irim.eur.nl/research-support/meta-essentials.
- Van Schoors, M., Caes, L., Knoble, N. B., Goubert, L., Verhofstadt, L. L., & Alderfer, M. A. (2017). Systematic review: Association between family functioning and child adjustment after pediatric cancer diagnosis: A meta-analysis. *Journal of Pediatric Psychology, 41*(1), 6-18. <https://doi.org/10.1093/jpepsy/jsw1070>.
- Vohr, B., Jodoin-Krauzyk, J., & Tucker, R. (n.d.). *Resources: A strong predictor of impact for families of infants with hearing loss*. <https://slideplayer.com/slide/8619284/>.
- Walsh, F. (1994). Healthy family functioning: Conceptual and research developments. *Family Business Review, 7*(2), 175-198. <https://doi.org/110.1111/j.1741-6248.1994.00175.x>.
- Ware, J. E., Kosinski, M., & Keller, S. D. (1996). A 12-item short form health survey: Construction of scales and preliminary tests of reliability and validity. *Medical Care, 34*, 220-233. <https://doi.org/210.1097/00005650-199603000-199600003>.
- Ware, J. E., Snow, K. K., Kosinski, M., & Gandek, B. (1993). *SF-36 Health Survey: Manual and interpretation guide*. The Health Institute, New England Medical Center, Boston, MA.
- Whittaker, J. E. V., Harden, B. J., See, H. M., Meisch, A. D., & Westbrook, T. R. (2011). Family risks and protective factors: Pathways to Early Head Start toddlers' social-emotional functioning. *Early Childhood Research Quarterly, 26*, 74-86. <https://doi.org/10.1016/j.ecresq.2010.1004.1007>.
- Williams, N. A., Villachan-Lyra, P., Marvin, C., Chaves, E., Hollist, C., Hatton-Bowers, H., & Barbosa, L. N. (2019). Anxiety and depression among caregivers of young children with Congenital Zika Syndrome in Brazil. *Disability and Rehabilitation, 41*(10), 1692-1700. <https://doi.org/10.1080/09638288.2019.1692252>.
- Wilson, M. H. (2009). *The associations between social support, economic strain, and parenting stress among at-risk families*. [Master's Thesis, University of Kansas]. https://kuscholarworks.ku.edu/bitstream/handle/1808/5439/Wilson_ku_0099M_10261_DATA_1.pdf?sequence=1.
- Wohlfeiler, M. M., Macias, M. M., & Saylor, C. F. (2008). Paternal correlates of cognitive and behavioral functioning in children with myelomeningocele. *Developmental Medicine and Child Neurology, 50*, 864-869. <https://doi.org/810.1111/j.1469-8749.2008.03070.x>.
- World Health Organization. (1996). *WHOQOL-BREF: Introduction, administration, scoring and generic version of the assessment*. World Health Organization.

Yu, S., Levesque-Bristol, C., & Maeda, Y. (2018). General need for autonomy and subjective well-being: A meta-analysis of studies in the US and East Asia. *Journal of Happiness Studies, 19*, 1863-1882. <https://doi.org/10.1007/s10902-10017-19898-10902>.

APPENDIX

Measures and Effect Size Data Used for the Meta-Analysis of the Relationships Between the Adequacy of Family Resources and Personal, Family and Child Well-Being

Study	N	FRS ^a		Well-Being Measures ^b	r	95% CI ^c	
		Scale	#			LL	UL
General Health							
Bachanas et al. (2001)	68	DL	30	Brief Symptom Inventory	.35	.12	.55
Brown et al. (2000)	55	DL	30	Symptom Checklist-90-R	.25	-.02	.49
Burrell et al. (1994)	53	LD	31	Quest. Resources & Stress	.63	.43	.77
Dunst et al. (1986b)	21	DL	30	Health & Well-Being Index	.45	-.01	.75
Dunst & Leet (1987)	45	DL	30	Health & Well-Being Index	.56	.31	.74
Hill (2010)	57	LD	31	General Health Survey-SF12	.47	.23	.65
Kelley et al. (2000)	102	LD	31	Brief Symptom Inventory	.46	.29	.60
Kelley et al. (2011)	230	LD	31	Brief Symptom Inventory	.45	.34	.55
Kelley et al. (2013)	480	LD	31	Brief Symptom Inventory	.31	.23	.39
Lindsey & Barry (2011)	157	DL	30	Dep. Anxiety Stress Scale	.51	.38	.62
Persha & Rao (2003) 1	51	VH	22	Brief Symptom Inventory	.37	.10	.59
Persha & Rao (2003) 2	54	VH	22	Brief Symptom Inventory	.31	.04	.54
Salzer (2005)	56	LD	31	General Health Survey-SF36	.11	-.16	.37
Depression							
Budescu et al. (2018)	115	VH	18	CES-Depression Scale	.27	.09	.43
Candelaria et al. (2006)	103			Beck Depression Scale	.37	.19	.53
Chang & Fine (2007)	580	DL	30	CES-Depression Scale	.16	.08	.24
Cheesman (2011)	30	DL	30	CES-Depression Scale	.69	.43	.85
Eshbaugh et al. (2006)	523	DL	30	CES-Depression Scale	.32	.24	.40
Espeleta et al. (2019)	333	DL	30	CES-Depression Scale	.35	.25	.44
Herman & Marcenko	150	DL	18	QRS-SF Depression Subscale	.41	.27	.54
Littlewood (2008)	175	DL	30	GHQ Depression Subscale	.32	.18	.45
Loutzenhiser (2001) 1	23	LD	31	Beck Depression Inventory	.50	.09	.77
Loutzenhiser (2001) 2	23	LD	31	Beck Depression Inventory	.50	.09	.77
Ridings et al. (2018)	562	DL	30	Beck Depression Inventory	.46	.39	.52
Salzer (2005)	56	LD	31	CES-Depression Scale	.36	.10	.57
Whittaker et al. (2011)	114	DL	30	CES-Depression Scale	.34	.16	.49
Williams et al. (2019)	50	VH	22	Beck Depression Inventory	.55	.31	.72
Psychological Stress							
Gatling (2005)	118	DL	30	Perceived Stress Scale	.50	.35	.63
Johnson (2016)	36	VH	20	Perceived Stress Inventory	.42	.09	.66
Williams et. el. (2019)	50	VH	22	Beck Anxiety Inventory	.36	.08	.58
Life Satisfaction							
Budescu et al. (2018)	115	VH	18	Life Orientation Test	.26	.08	.42
Cheesman (2011)	30	DL	30	WHO Quality of Life Scale	.66	.38	.83
Coleman-Reed (2016)	94	VH	17	Satisfaction with Life Scale	.48	.30	.62
Dunst et al. (1986b)	21	DL	30	Psych. Well-Being Index	.61	.21	.83
Parenting Stress							
Armans (2018)	46	DL	30	Parenting Stress Index	.29	-.01	.54
Chang & Fine (2007)	580	DL	30	Parenting Stress Index	.30	.22	.37
Cheesman (2011)	30	DL	30	Parenting Stress Index	.64	.35	.82
Ericson (1998)	94	LD	31	Parenting Stress Index	.54	.38	.67
Grunberg (2016)	199	VH	21	Parenting Stress Index	.40	.28	.51
Levine (2010)	26	DL	30	Parenting Stress Index	.64	.32	.83
Macias et al. (2007) 1	71	DL	30	Parenting Stress Index	.50	.30	.66
Macias et al. (2007) 2	71	DL	30	Parenting Stress index	.33	.10	.53
Persha & Rao (2003) 1	51	VH	22	Parenting Stress Index	.56	.32	.73
Persha & Rao (2003) 2	54	VH	22	Parenting Stress Index	.15	-.13	.41
Pratt (1992)	503	LD	31	Parenting Stress Index	.42	.35	.49
Smith et al. (2001)	880	DL	30	Parenting Stress Index	.38	.32	.44
Spratt et al. (2007) 1	70	DL	30	Parenting Stress Index	.54	.35	.69
Spratt et al. (2007) 2	45	DL	30	Parenting Stress Index	.37	.08	.60
Spratt et al. (2007) 3	45	DL	30	Parenting Stress index	.55	.30	.73
Taylor (1999)	990	TY	28	Parenting Stress Index	.43	.38	.48
Vohr et al. (n.d.)	100	DL	30	Parenting Stress Index	.59	.44	.71
Whittaker et al. (2011)	114	DL	30	Parenting Stress Index	.36	.19	.51
Williams et al. (2019)	50	VH	22	Parentng Stress Index	.47	.21	.67
Wilson (2009)	151	LD	24	Stress Index for Parentng	.38	.23	.51

Appendix, continued

Study	N	FRS ^a		Well-Being Measures	<i>r</i>	95% CI	
		Scale	#			LL	UL
Family Stress							
Bachanas et al. (2001)	68	DL	30	Daily Hassles Scale	.30	.06	.51
Candelaria et al. (2006)	103	DL	22	Life Events Questionnaire	.39	.21	.54
Chang & Fine (2007)	580	DL	30	Stressful Life Events Scale	.18	.10	.26
Kilmer et al. (2010)	100	DL	30	Life Events Checklist	.38	.20	.54
Loutzenhiser (2001) 1	23	LD	31	Life Events Inventory	.57	.18	.80
Loutzenhiser (2001) 2	23	LD	31	Life Events Inventory	.57	.18	.80
Persha & Rao (2003) 1	51	VH	22	Life Events Questionnaire	.48	.23	.67
Persha & Rao (2003) 2	54	VH	22	Life Events Questionnaire	.16	-.12	.42
Pratt (1992)	503	LD	31	Fam. Inventory Life Events	.35	.27	.42
Taylor (1999)	990	TY	28	Fam. Inventory Life Events	.39	.34	.44
Family Functioning							
Dunst et al. (1986b)	13	DL	30	Family Environment Scale	-.04	-.62	.57
Grunberg (2016)	100	VH	21	Dyadic Adjustment Scale	.41	.23	.56
Loutzenhiser (2011) 1	23	LD	31	Family Assessment Device	.29	-.16	.64
Loutzenhiser (2001) 2	23	LD	31	Family Assessment Device	.38	-.06	.70
Ramos (2019)	31	DL	30	Conflict Tactics Scale	.25	-.13	.57
Family Quality of Life							
Ericson (1998)	94	LD	31	Fam. Function. Style Scale	.46	.28	.61
Farber et al. (2002)	73	DL	30	Fam. Function. Style Scale	.38	.16	.56
Ferreira (2014)	43	DL	30	Family Quality of Life Scale	.55	.29	.73
Persha & Rao (2003) 1	51	VH	22	Fam. Function. Style Scale	.46	.20	.66
Persha & Rao (2003) 2	54	VH	22	Fam. Function. Style Scale	.49	.25	.67
Child Behavior & Health							
Cheesman (2011)	30	DL	30	Child Behavior Checklist	.59	.28	.79
Kelley et al. (2011)	230	LD	31	Child Behavior Checklist	.26	.13	.38
Kilmer et al. (2010)	100	DL	30	Beh. & Emot. Rating Scale	.36	.17	.52
Korloff et al. (2001)	110	DL	30	Beh. & Emot. Rating Scale	.44	.27	.58
Wohlfeiler et al. (2008) 1	48	DL	30	Child Behavior Checklist	.25	-.04	.50
Wohlfeiler et al. (2008) 2	48	DL	30	Child Behavior Checklist	.30	.01	.54

^a# = of scale items, DL = Dunst and Leet (1985), LD = Leet and Dunst (1988), VH = Van Horn et al. (2001), and TY = Taylor (1999).

^bSee Table 3 for the sources of each of the well-being measures.

^cCI = Confidence interval, LL = Lower limit effect size, and UL = Upper limit effect size.